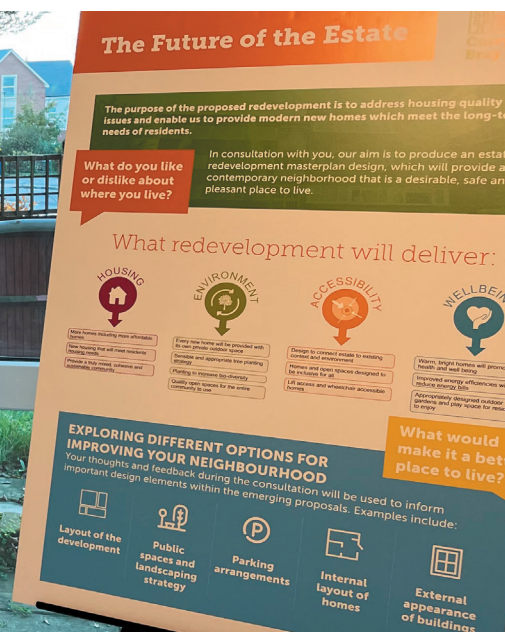
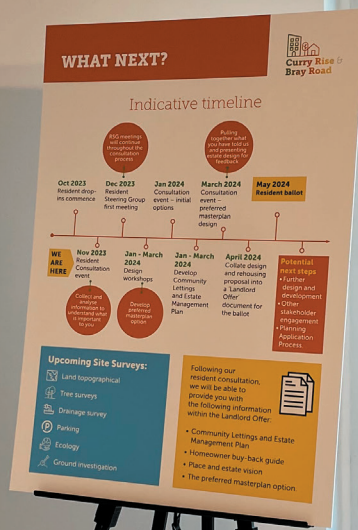


# Curry Rise & Bray Road NEWSLETTER

January 2024



Hello and welcome to the second edition of the Curry & Bray resident newsletter.

Our regular newsletters will keep you informed about the redevelopment proposals for the Curry Rise and Bray Road estate.

Alternatively, you can find out more by viewing our website at [curryandbray.commonplace.is](http://curryandbray.commonplace.is). This is our hub for all information relating to the development, including online feedback surveys.



## Indicative timeline



# Weekly drop-in

The NHG housing team are available to meet with you every **Tuesday afternoon** at **Flat 1, Curry Rise 2pm-6pm**. Please contact us if you would like to book an appointment or drop in.



Sharlmane  
Laurent



Joyce  
Mensah

## Need to discuss your move from an affected block?

Please contact **Sharlmane Laurent** on **07803 815 413** or email: [sharlmane.laurent@nhg.org.uk](mailto:sharlmane.laurent@nhg.org.uk)



## Looking for help and advice about the redevelopment?

Your independent advisors are available. Please contact Tpas on **0800 731 1619** or email: [millhilleast@tpas.org.uk](mailto:millhilleast@tpas.org.uk)



Tonia Punter-ojong



Elaine Warwick

# Upcoming resident engagement events

## Masterplan Design Consultation

You will have received an invitation flyer to our next resident consultation event where we would like to share our ideas for the concept layout of the estate.

**Saturday 3 February 2024**  
**at 1 Curry Rise,**  
**between 10am and 2pm**

Since our last event, the project team have been carrying out technical surveys of the estate and reviewing your feedback forms from the last event. We are really keen to understand how you feel about the potential redevelopment of the site, so please come along if you can.

**Would you like to see an example of the homes Notting Hill Genesis build?**  
**- Come and view a show flat on the Graham Park estate!**

Tours of the rented show flat will be held on the following dates:

- **Tuesday 20 February between 11-1pm**
- **Tuesday 27 February between 2pm – 4pm**

Transport will be provided and further details will be given once you have registered.

Please register your interest!



By scanning the QR code, emailing [millhilleast@nhg.org.uk](mailto:millhilleast@nhg.org.uk) or letting us know at the consultation event.



We are also building homes for sale at Grahame Park. A link to a shared ownership flat can be found by scanning this QR code.

Details of all future events will be communicated to you via newsletters, posters and on the website: [curryandbray.commonplace.is](http://curryandbray.commonplace.is).

# Feedback summary

We would like to thank everyone who provided feedback at our first resident engagement event on **Tuesday 28 November 2023** and via our website. We received some excellent suggestions and learned a lot about what's important to you.

## Here are the key themes that have emerged to date.

We asked people what they thought about the local area...

Positive area  
**Friendly** Love the area  
**Good community**  
Good bus connections  
**Comfortable** **Very quiet**  
Peaceful Community

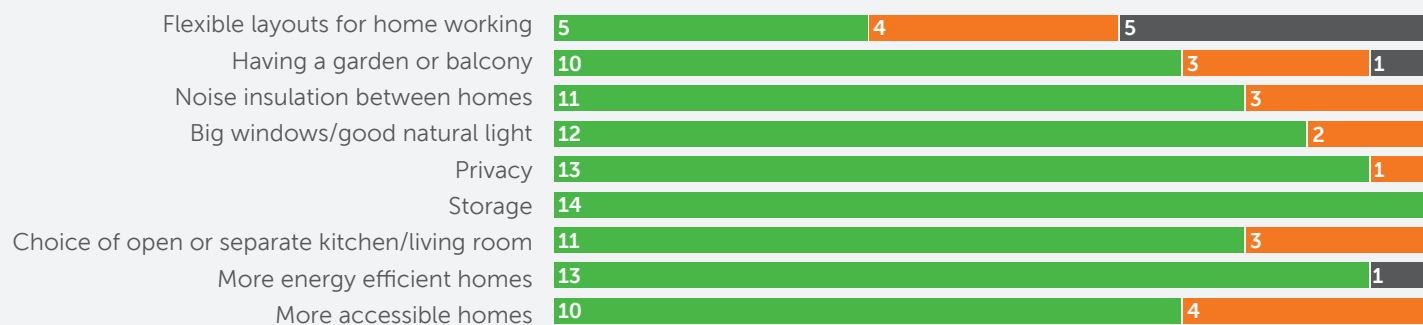
People told us what they like about the area and their homes as they are now...

Space for play  
**Large storage cupboards**  
Separate kitchens **Green spaces**  
**Spacious flat layout and big rooms** Large windows  
Trees encouraging birds and other wildlife

We asked people what they DON'T like about their homes and the wider local area...

Uneven flooring Poor street lighting and car park security  
**Cracks** Outdated kitchen  
**Lack of private gardens and balconies** Lack of building maintenance  
No fibre broadband Lack of play equipment for children

## We asked local residents how important the following options were in relation to the design of new homes?



## Local residents were asked how important the following options are in relation to the design of new streets?



## We also asked how important people considered the following options in relation to the design of open spaces?



KEY - ■ Very ■ Slightly ■ Not

## What you suggested is important for new homes:

Ventilated bathrooms Charging points for scooters and motorbikes  
Built-in wardrobes **Affordability** Low maintenance **Parking space allocation**  
**Balconies** **More houses, less flats** Sound proofing Safe crossings Defensible spaces  
Push button entrance doors **Underground car parking** Ground floor flats  
Less one-way routes **Traffic calming measures** Dealing with antisocial behaviour  
Community Centre **Private gardens at ground floor level**  
**Maintaining as much green space as possible**



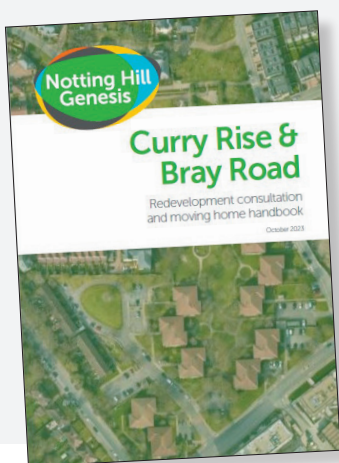


# Resident Involvement

## Redevelopment Consultation

In October 2023 you should have received your redevelopment consultation handbook. This provides useful information about how we will be taking on board your views during the consultation process in order to develop a 'landlord offer' pack which residents will be asked to vote on.

The 'landlord offer' will cover the broad vision for the site and what the redevelopment priorities are. It will include the following:



- Community Lettings and Estate Management Plan
- Homeowner buy-back guide
- Place and estate vision
- The preferred masterplan estate layout option.

## Ballot vote

We are working towards a ballot vote in May 2024. For further information on this, please refer to section 1.6 & 1.7 (page 4) of your redevelopment consultation handbook.

## Resident Steering Group (RSG)

To ensure there is effective oversight, we have set up the RSG who are expected to represent the interests of tenants and leaseholders 'residents' of Curry Rise and Bray Road affected by the redevelopment proposals. The RSG will play an important role in helping guide the consultation, making recommendations and giving feedback to Notting Hill Genesis along the way.

We hold monthly meetings with the RSG. At the last meeting we discussed consulting on the Community Lettings and Estate Management Plan. **Please come along to the consultation event on Saturday 3 February to hear more about this.**

## \*REMINDER\*

### Housing Needs Survey.

Joyce Mensah and Sharlmane Laurent will be in contact to conduct your housing needs survey.



For any queries, please contact:

**millhilleast@nhg.org.uk**

**0800 731 1619**

