

Project Vision



Notting Hill Genesis (NHG) are developing exciting new plans for the site known as Plot 9 - the hoarded area just opposite the council building on the corner of Grahame Park Way and Bristol Avenue.

The proposal is to build a welcoming space for residents and visitors to enjoy a coffee, discover more about the regeneration and showcase the new home and facilities as well as allow space for community and enterprise activities and events.

This facility will be located on the site for up to 10 years on a key gateway site to be a focal point to;

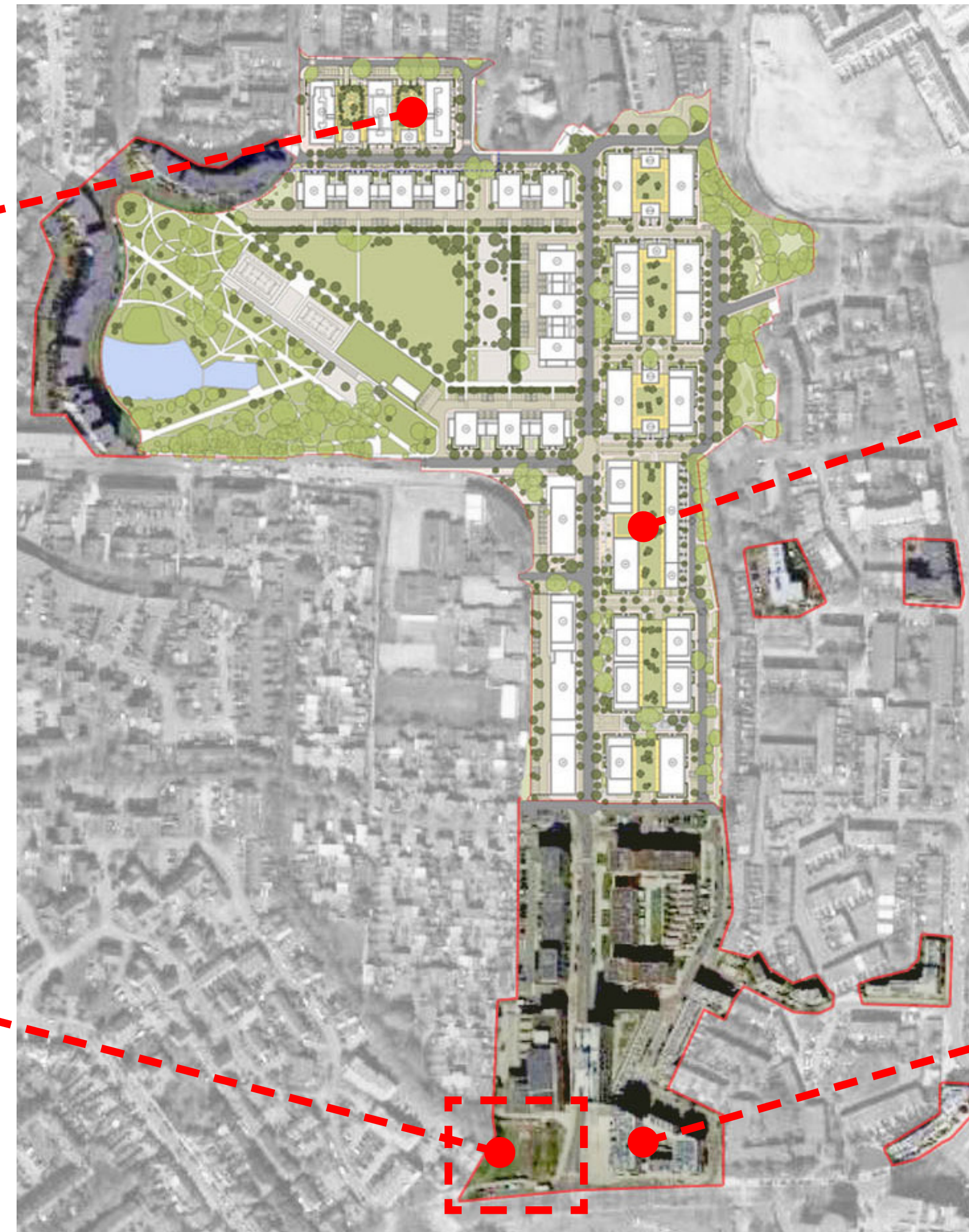
- Find out about the Grahame Park regeneration plans and NHG.
- Provide a genuine and authentic experience of what the regeneration will offer –including a range of active commercial/community uses
- Bring people together –both existing and new residents and customers.
- Showcase the product, choice and lifestyle of investing, buying or moving into one of our new homes
- Establish, incubate and grow new uses and commercial and enterprise activity (which could move into later phases).
- Help change perceptions of the area.



Plot A – First new homes



Project Site - Gateway to wider redevelopment



Consented Masterplan



Completed Phases

Site Opportunities and Landscape

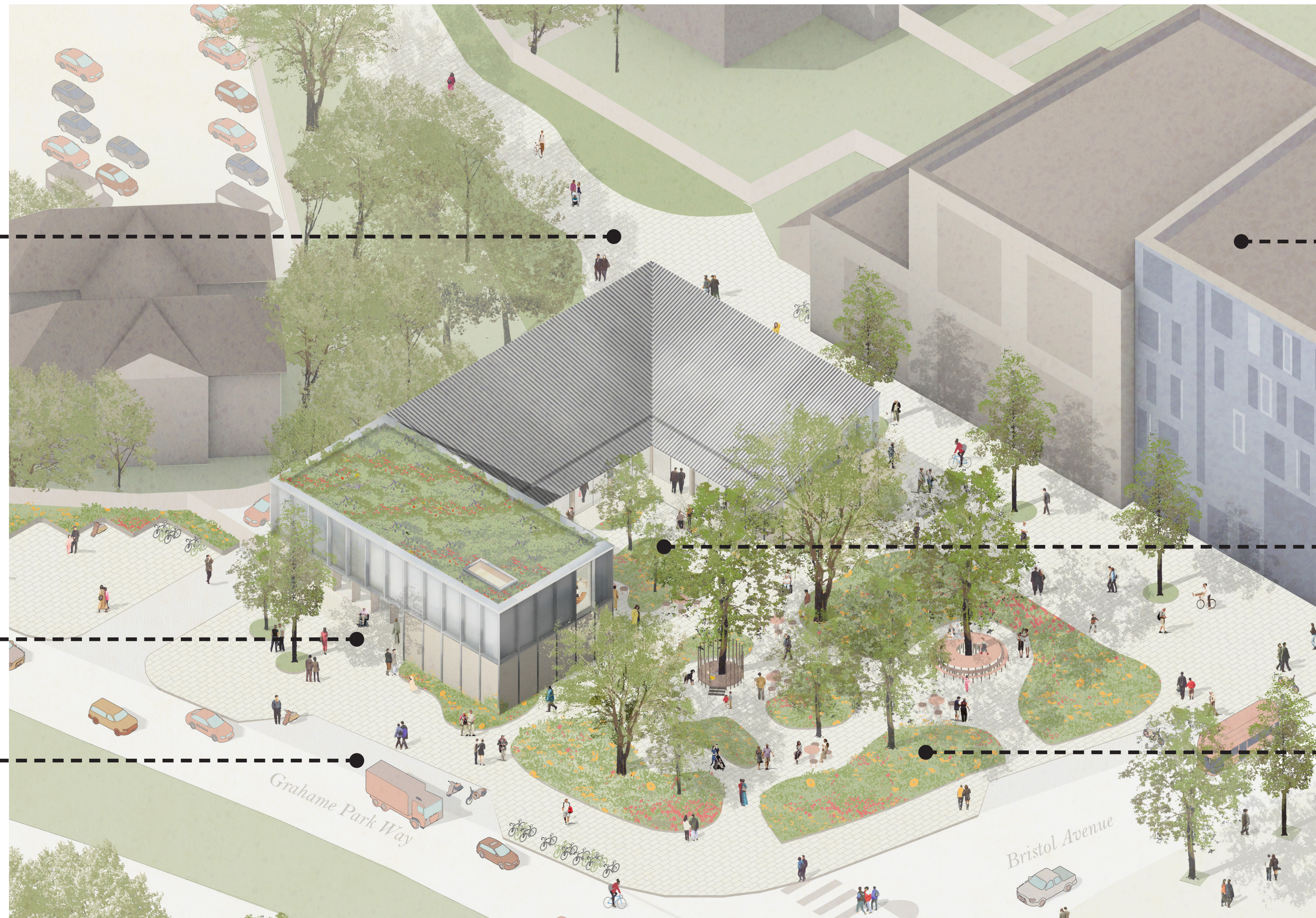


The building has a two storey section facing on to Grahame Park Way with a single storey section with a pitched roof behind. The facility is expected to be on site for the next ten years to act as a focal point for the next stage of regeneration.

Pedestrian route to be re-routed around proposed building through new landscaped area and connection to Bristol Avenue.

New entrance forecourt off Grahame Park Way.

Retained parking bays on Grahame Park Way and relocation of bike stands.



Indicative 3D view of proposal

Library and College building to face onto new landscaped garden and pedestrian route.

Proposed building designed around central courtyard.

New landscaped area which will be open to the public for enjoyment and activities. The intention is to develop the detailed proposals for the use of this space with the community.

Productive & Playful Landscapes

The site will create a natural landscape around the building, incorporating the trees currently on the site. Here we are looking to explore ways of involving the local community to create a natural, productive and playful space for all to enjoy!



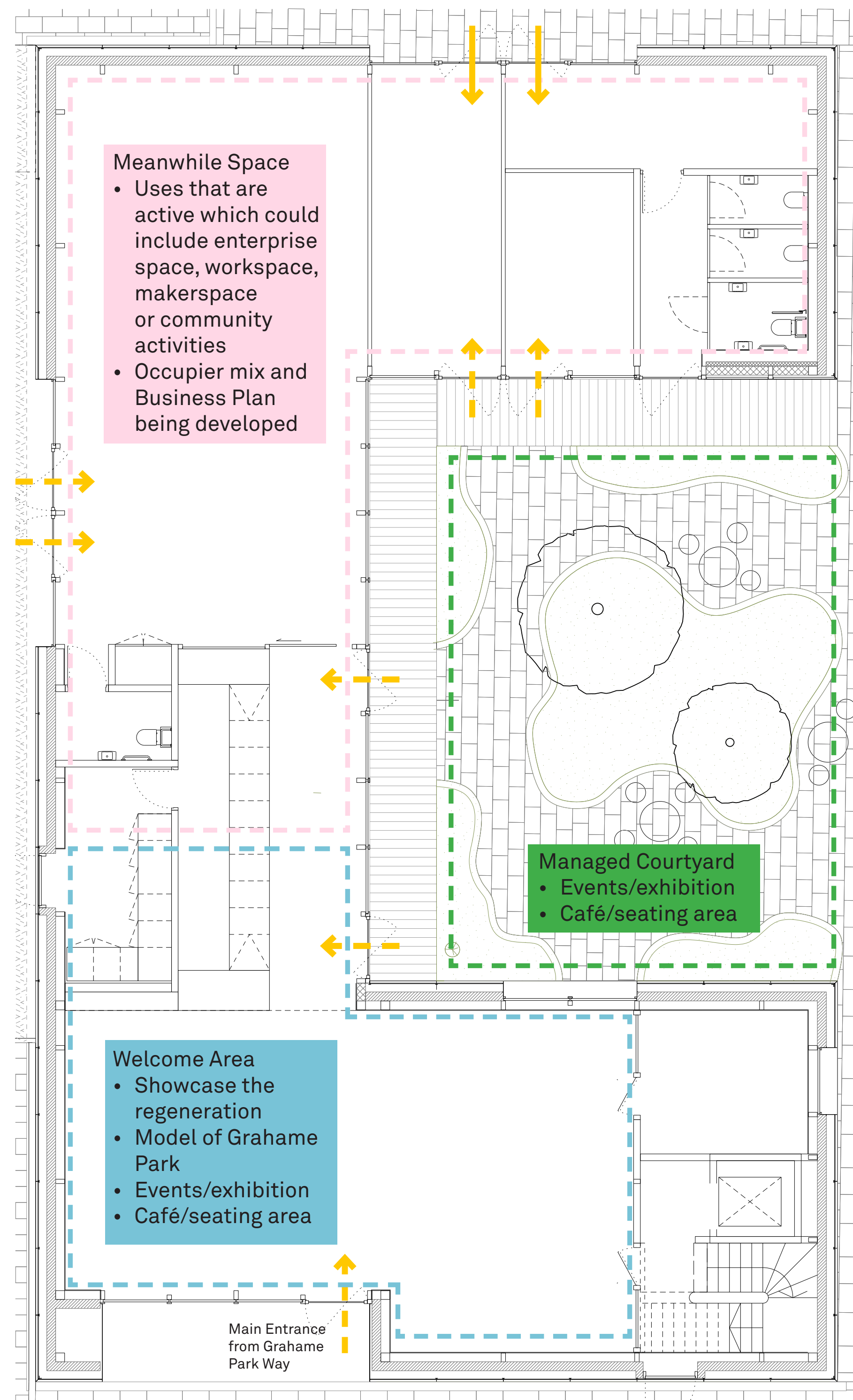
Proposed Building



Timber Frame Construction

We are proposing to utilise a structural timber frame throughout. We believe this is the most suitable material for this project because it is a natural material - proven to improve wellbeing of users. It is also a highly sustainable material - low embodied carbon which can be sourced locally and potential for re-use after.

Above: Material precedents for timber frame construction.

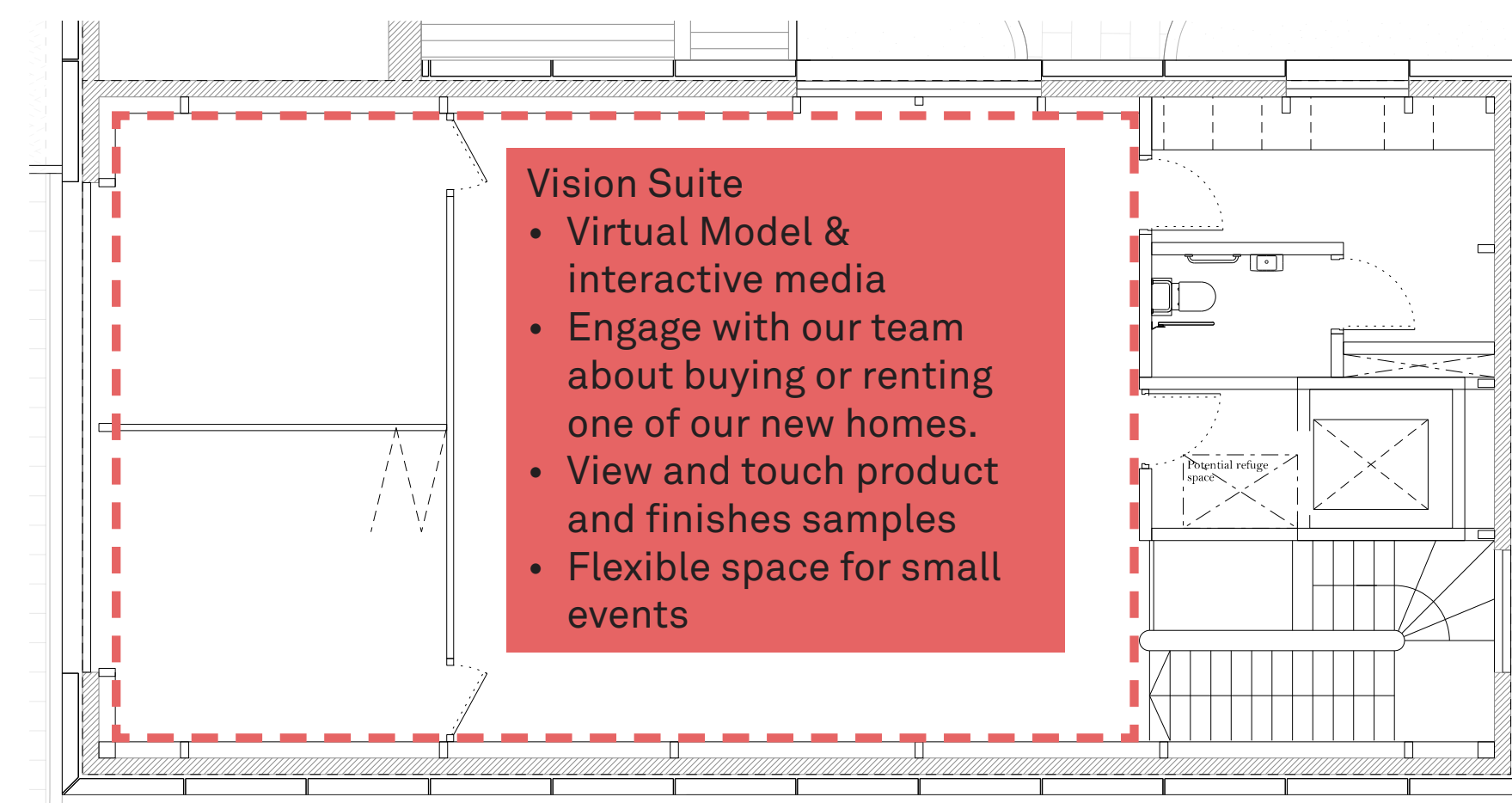


Ground Floor Plan
Floor area of 320m²

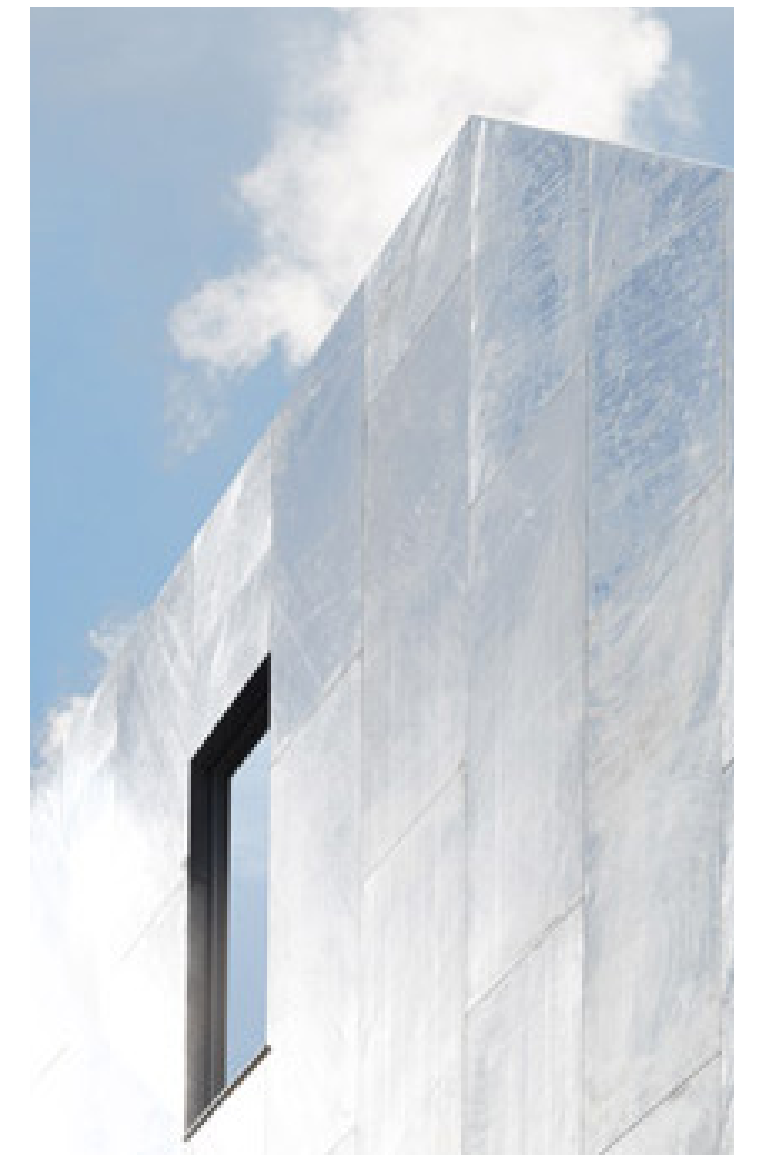
Next Steps

We are looking to submit a full planning application in June this year with the aim that the building will be completed in late 2023.

For more information please go to <http://www.grahamepark.info> or email us at grahamepark@nhg.org.uk.



First Floor Plan
Floor area of 130m²



External Materials

We are proposing to use a natural clay render to the base of the building. This is a "heavy" feeling earthy material which is easily recycled as it can simply return to the earth.

Above this we are proposing to use a metal finish which can be perforated to create a lighter feeling. These panels would have potential for re-use after.

Above: Material precedents for galvanised steel and clay render.

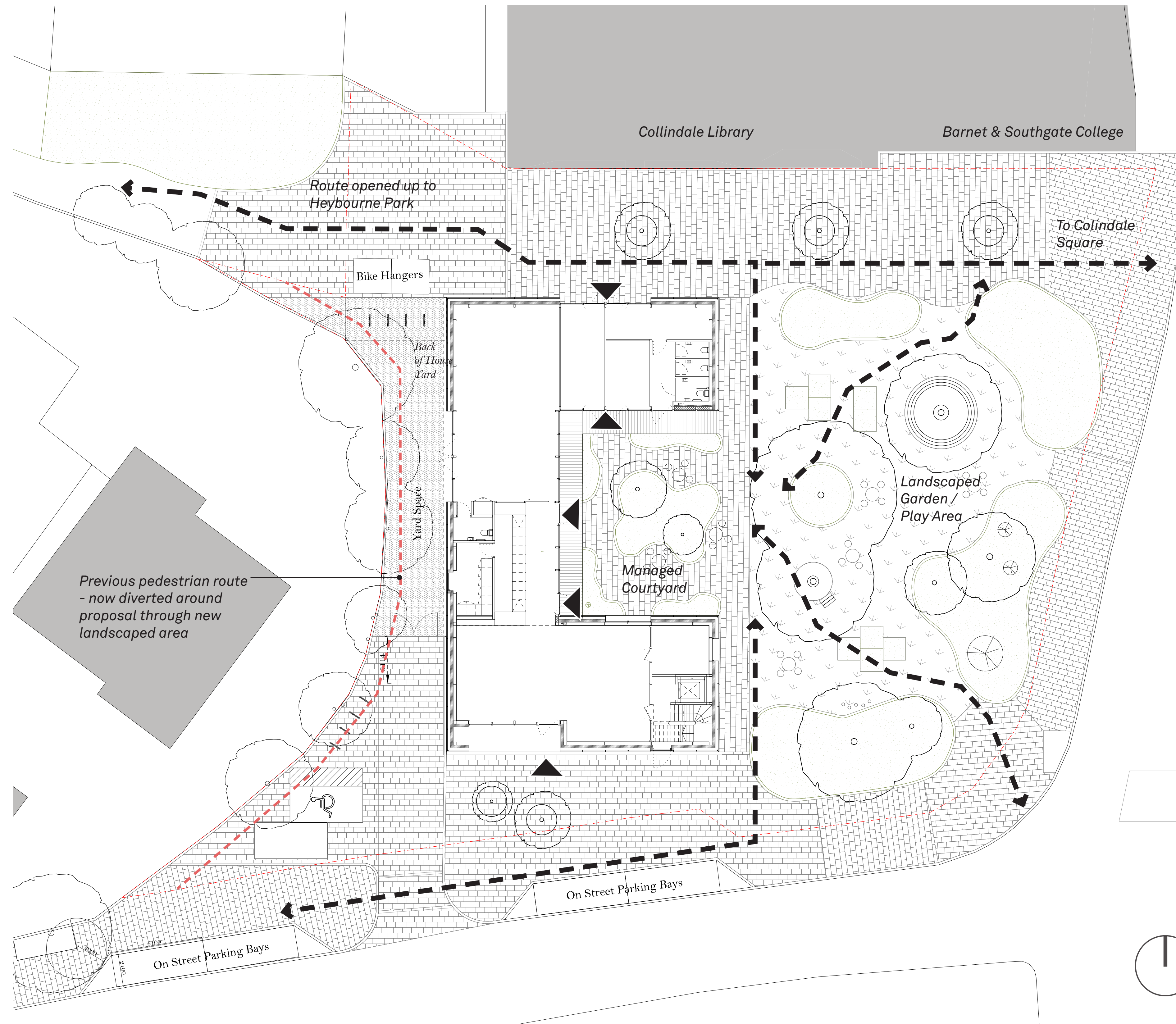
Tell us what you think!

'If you have some ideas for what activities could happen in the building or the landscaped area, please add a Post It note below (or fill in a feedback form).



Activities in the landscape

Activities in the landscape



Key

← → Pedestrian Flow

▶ Key Entrance

Empty dashed box for providing feedback on landscape activities.

Empty dashed box for providing feedback on landscape activities.